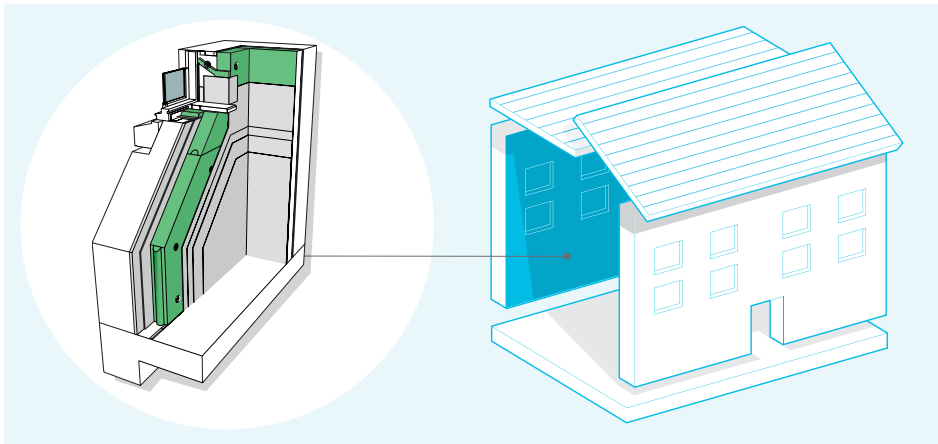


Retrofit System for Internal Wall Insulation Lime Plastered Finish



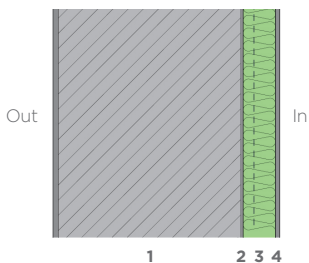
System Performance

u - values 0.60 - 0.28

airtightness 5 - 3 @50pa

A highly effective solution that eliminates the moisture risk associated with IWI. NBT IWI systems use **Pavadentro** to provide active moisture control through absorption and redistribution of moisture within a woodfibre board and integral mineral layer. The system combines the best of modern technological advances with natural, traditional materials; finished with a two-coat lime plaster that perfectly compliments traditional and modern wall finishes.

Cross-section of system

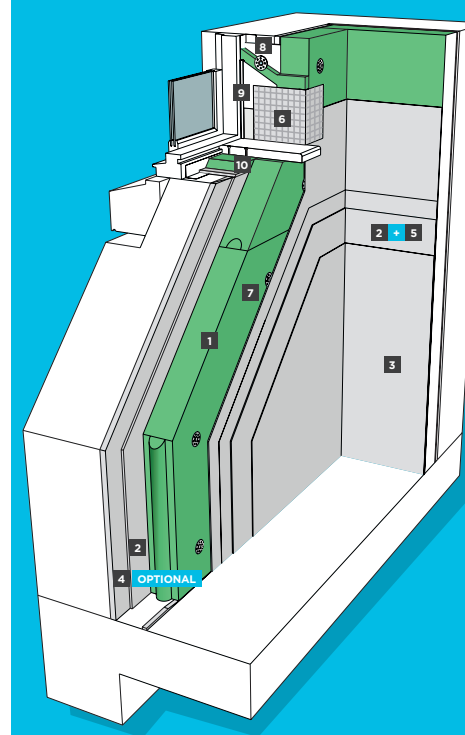


1. External wall (masonry/stone)
2. NBT absorbent plaster (min 5mm)
3. NBT PAVADENTRO
4. Two-coat meshed lime finish

How NBT systems compare to standard build



Components & Accessories for NBT Internal Wall Insulation System Lime Plastered Finish



<p>1 Pavadentro P12</p>	<p>2 Kalkin RK 70 N P27</p>
<p>3 Kalkin Glätt W P27</p>	<p>4 Kalkin RK 38 P27</p>
<p>5 Render & Plaster Mesh P34</p>	<p>6 PVC Corner Bead, Perforated Wings P31</p>
<p>7 Ejot H3 P22</p>	<p>8 Ejot DDA 8/25 x L Reveal Fixing P23</p>
<p>9 Pavatex WIN Tape P19</p>	<p>10 Reveal Board P15</p>

* Please refer to www.natural-building.co.uk or the contents page of this pack to find more information about the range of NBT products

System build up

