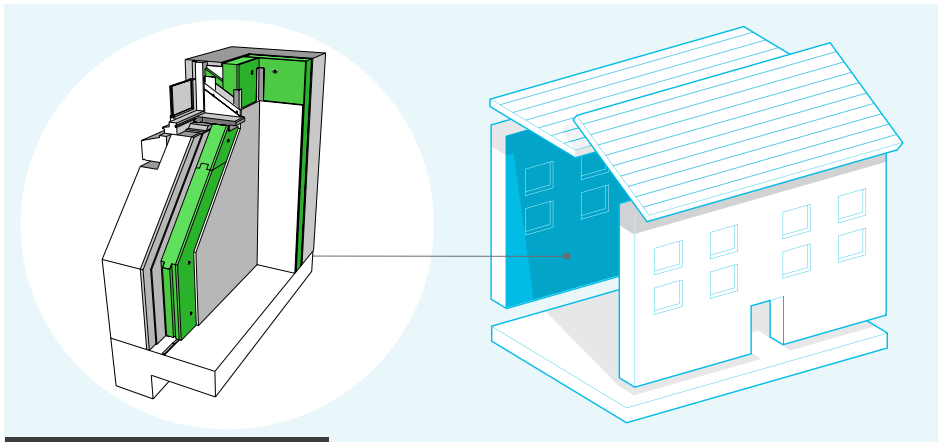


# Retrofit System for Internal Wall Insulation Dry Lined



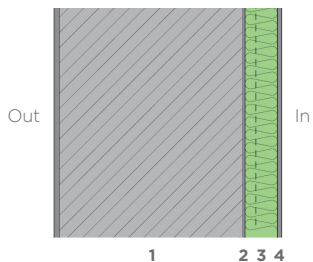
## System Performance

u - values 0.60 - 0.28

airtightness 5 - 3 @50pa

A highly effective solution that eliminates the moisture risk associated with IWI. NBT IWI systems use **Pavadry** to provide active moisture control through absorption and redistribution of moisture within a woodfibre board and integral mineral layer. The system incorporates a composite board, that is drylined with plasterboard, providing a load bearing surface. Installed and made good within a day, the system provides a clean lined modern finish.

## Cross-section of system

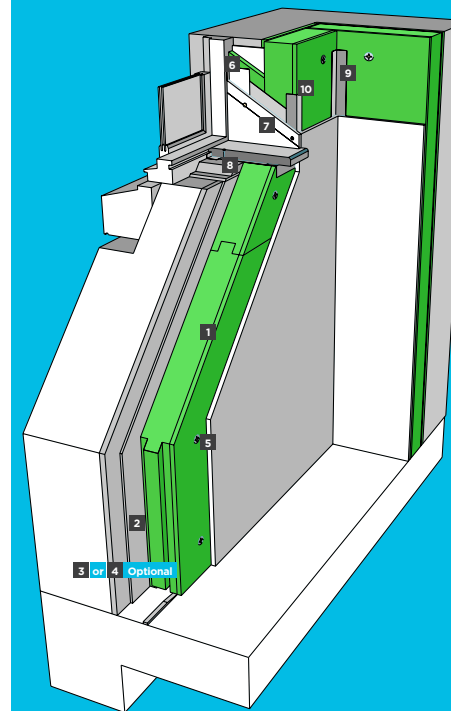


1. External wall (masonry/stone)
2. NBT absorbent plaster (min 5mm)
3. NBT Pavadry
4. Plasterboard or Fermacell board

## How NBT systems compare to standard build



# Components & Accessories for NBT Internal Wall Insulation System Dry Lined



<p>1 P13 <b>Pavadry</b></p>	<p>2 P27 <b>RK70 Internal Bonding &amp; Base Coat</b></p>
<p>3 P27 <b>RK38, Internal Levelling Coat (Optional)</b></p>	<p>4 P25 <b>Speedfill (Optional)</b></p>
<p>5 P24 <b>MRS-U</b></p>	<p>6 P19 <b>Pavafix WIN, plaster tape</b></p>
<p>7 P23 <b>DDA 8/25 x L Reveal Fixings</b></p>	<p>8 P15 <b>Reveal Board</b></p>
<p>9 + 10 P18 <b>Pavafix 20/40 and Pavafix 60 Internal Tape</b></p>	

\* Please refer to [www.natural-building.co.uk](http://www.natural-building.co.uk) or the contents page of this pack to find more information about the range of NBT products

## System build up

