

System Performance

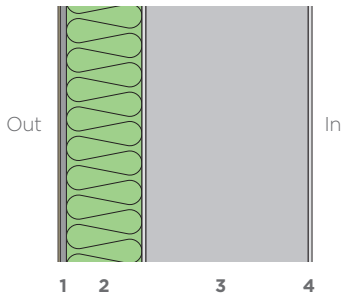
u - values 0.26 - 0.10

y - values 0.05 - 0.02

airtightness 5 - 0.6 @50pa

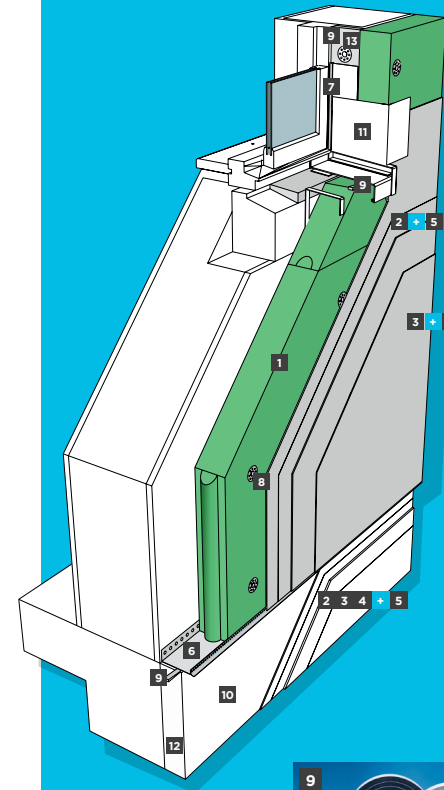
The system complies with the most stringent of standards - from baseline building regulations through to Passivhaus. The system is available in an extensive number of render options including, colour, texture and weathering resistance. All components for the system are available from NBT.

Cross-section of system



1. NBT 2-coat render system
2. NBT DIFFUTHERM 60/80/100/120mm or more
3. Masonry substrate
4. Plaster

How NBT systems compare to standard build



<p>1 Diffutherm P9</p>	<p>2 MC55, External Base Coat P25</p>
<p>3 External Top Coat P26</p>	<p>4 Primer P29</p>
<p>5 Render and Plaster Mesh P34</p>	<p>6 Base Rail P30</p>
<p>7 APU Mesh Window Stop Bead P31</p>	<p>8 NTU P22</p>
<p>9 ISO-Blocco 600 6-15 P20</p>	<p>10 Plinth board (XPS) P34</p>
<p>11 Corner Mesh P31</p>	<p>12 DS 27 P29</p>
<p>13 Reveal Board P15</p>	

* Please refer to www.natural-building.co.uk or the contents page of this pack to find more information about the range of NBT products

System build up

