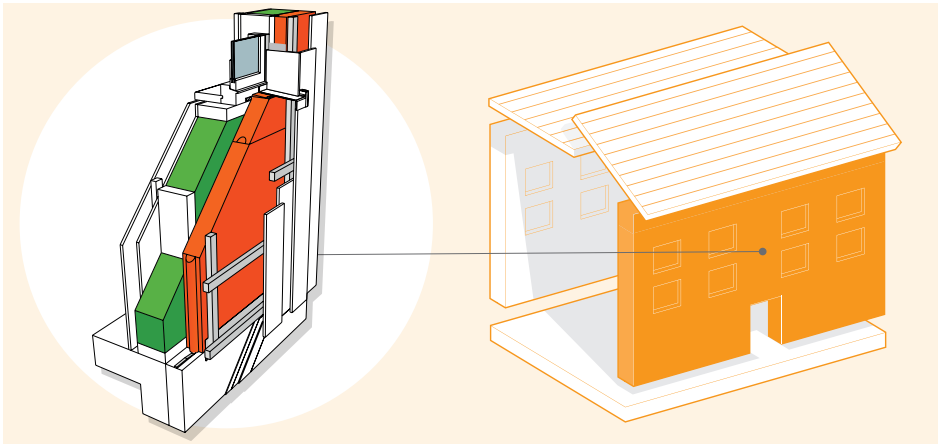


# New Build System for Timber Frame Clad



## System Performance

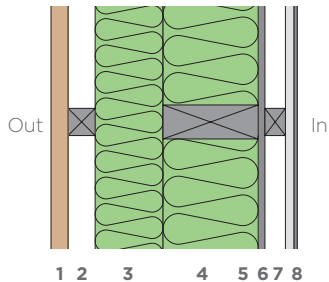
u - values 0.26 - 0.10

y - values 0.05 - 0.02

airtightness 5 - 0.6 @50pa

The system complies with the most stringent of standards - from baseline building regulations through to Passivhaus. The system is suitable for all external clad finishing options including brick, stone, timber, zinc, etc. All components for the system are available from NBT.

## Cross-section of system

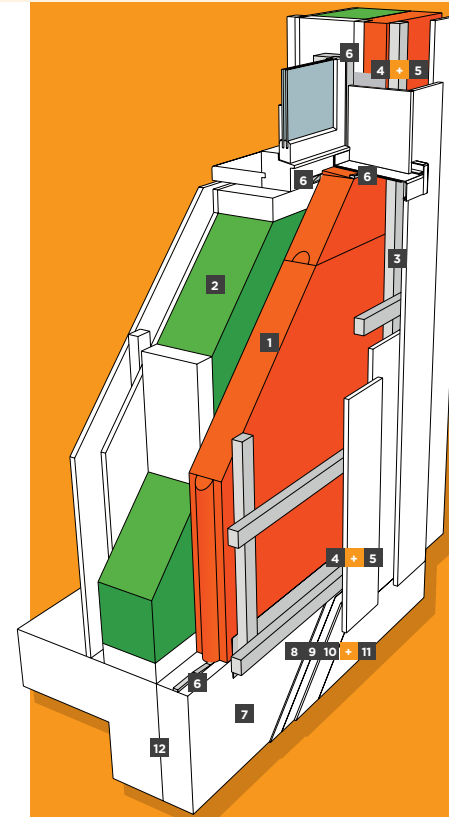


1. Cladding system (timber, brick, screen etc.)
2. Battened to create a 40mm ventilated void
3. NBT ISOLAIR 20/35 mm or NBT PAVATHERM-PLUS\* 60/80/100/120 mm
4. Stud & NBT PAVAFLEX
5. Racking board incl. airtightness detail (e.g. OSB 12/15 mm)
6. Service void 25 mm - optional (can be insulated for improved performance)
7. Plasterboard 12.5 mm
8. Plaster, skim and NBT emulsion paint

## How NBT systems compare to standard build



# Components & Accessories for NBT System for Timber Frame: Clad



1	P6,7,8	2	P16
Pavatherm-Plus, Pavatherm-Combi** and Isolair		Pavaflex	
3	P23	4	P18
TKR		Pavatape 150, external	
5	P19	6	P20
Pavabase primer		ISO-Bloco 600 2-6	
7	P34	8	P25
Plinth board (XPS)		MC 55 External Base Coat	
9	P34	10	P29
Render and Plaster Mesh		Primer	
11	P26	12	P29
External Top Coat		DS 27	

\* Please refer to [www.natural-building.co.uk](http://www.natural-building.co.uk) or the contents page of this pack to find more information about the range of NBT products

\*\* Pavatex FBA black breathable membrane should be used with open cladding

## System build up

