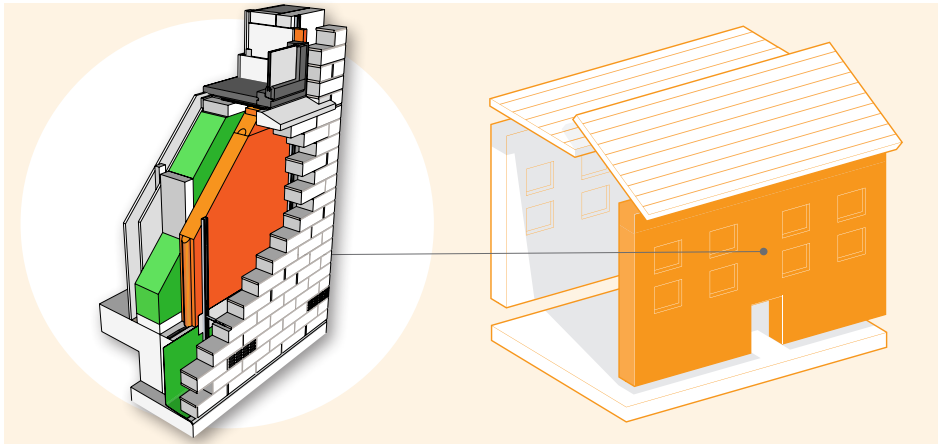


# New Build System for Timber Frame Brick Clad



## System Performance

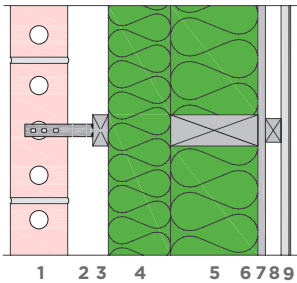
**u - values** 0.26 - 0.10

**y - values** 0.05 - 0.02

**airtightness** 5 - 0.6 @50pa

The system complies with the most stringent of standards - from baseline building regulations through to Passivhaus. The system is suitable for most external clad options including brick & stone. All components for the system are available from NBT.

## Cross-section of system

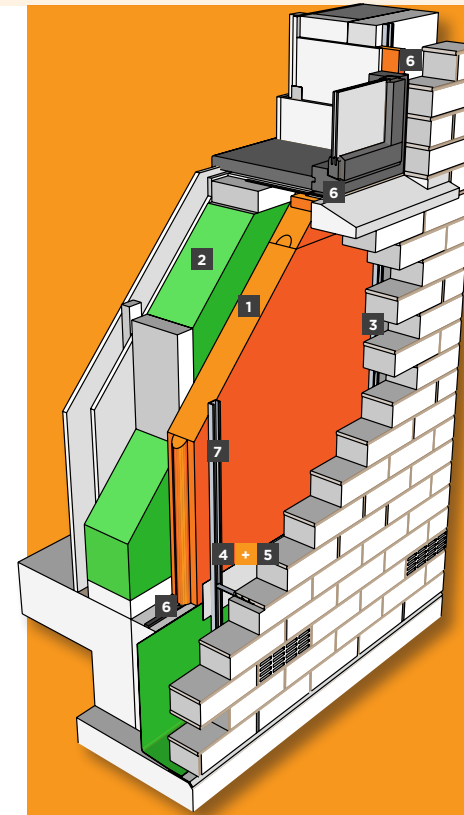


1. Brick Clad
2. Brick Ties
3. Timber Batten
4. NBT ISOLAIR 20/35 mm or NBT PAVATHERM-PLUS\* 60/80/100/120 mm
5. Stud & NBT PAVAFLEX
6. Racking board incl. airtightness detail (e.g. OSB 12/15 mm)
7. Service void 25 mm - optional (can be insulated for improved performance)
8. Plasterboard 12.5 mm
9. Plaster, skim and NBT emulsion paint

## How NBT systems compare to standard build



# Components & Accessories for NBT System for Timber Frame: Brick Clad



<p>1 P6,7,8 Pavatherm-Plus, Pavatherm-Combi and Isolair</p>	<p>2 P16 Pavaflex</p>
<p>3 P22 STR-H (for temporary fixing of the boards)</p>	<p>4 P18 Pavatape 150, external</p>
<p>5 P19 Pavabase primer</p>	<p>6 P20 ISO-Bloco 600 2-6</p>
<p>7 Ancon 25/14 Restraint System**</p>	

\* Please refer to [www.natural-building.co.uk](http://www.natural-building.co.uk) or the contents page of this pack to find more information about the range of NBT products

\*\* Not supplied by NBT

## System build up

