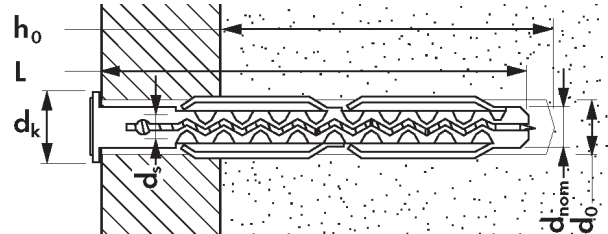


MLK Hollow Brick Plug with collar Ø 8



Building material



Concrete C20/25



Lightweight Concrete



Perforated Brick



Brick



Sand-lime brick



Gypsum

Approvals

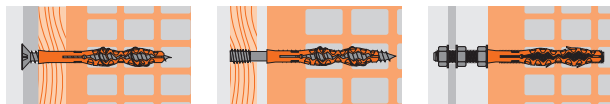


Nylon Quality
PA6

Features

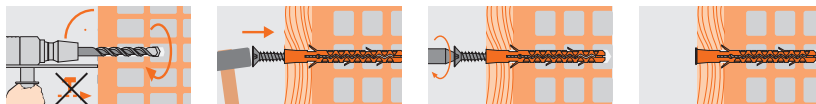
- Can be used with wood screws, chipboard screws and metric screws
- Ideal for use in brickwork
- For use with anchor rod M10 (ML14/MLK14)
- Special plug end geometry, ML6 and ML8, causes a knotting of the plug shanks
- Rotation resistance stops the plug rotating in the drill hole
- Controls installation due to collar (MLK)
- Made from high-quality polyamide PA6
- Pre installation or through fixing

Applications



- facings
- squared timbers
- roller blinds (only MLK)
- frames
- distance fixing

Installation



Make the drill hole

Drive in the plug

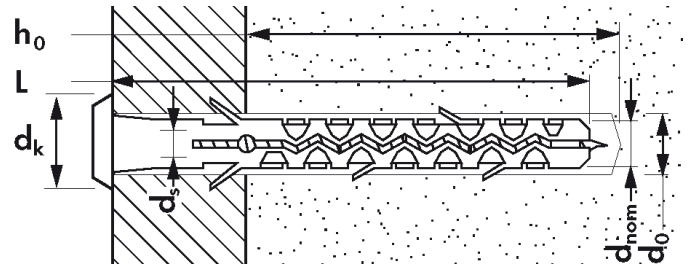
Fasten building material
with screw

MLK Hollow Brick Plug with collar Ø 8

Type	8 x 80
Plug and drill Ø mm d_{nom}	8
Length mm L	80
Collar Ø mm d_k	12.5
Screwtype wood/chipboard Ø mm d_s	5-6
Drilling depth mm h_0	90
Perforated Brick tension load (kN)	0.6
Lightweight Concrete tension load (kN)	0.25
Box contents	100
Outer carton	1200
Quantity per pallet	28800
Article code	1100808K

Important: without hammer drilling in perforated brick and lightweight concrete / Safety factor 5 / Reached with max. diameter wood screw / 1 kN \approx 100 kg

MLK Hollow Brick Plug with collar Ø 14



Building material



Concrete C20/25



Lightweight Concrete



Perforated Brick



Brick



Sand-lime brick



Gypsum

Approvals

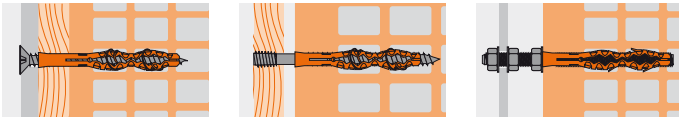


Nylon Quality
PA6

Features

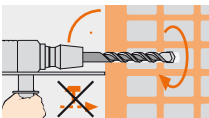
- Can be used with wood screws, chipboard screws and metric screws
- Ideal for use in brickwork
- For use with anchor rod M10 (ML14/MLK14)
- Special plug end geometry, ML6 and ML8, causes a knotting of the plug shanks
- Rotation resistance stops the plug rotating in the drill hole
- Controls installation due to collar (MLK)
- Made from high-quality polyamide PA6
- Pre installation or through fixing

Applications

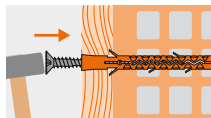


- facings
- squared timbers
- roller blinds (only MLK)
- frames
- distance fixing

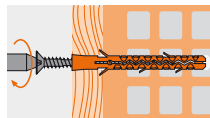
Installation



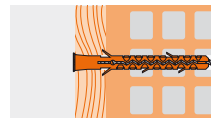
Make the drill hole



Drive in the plug



Fasten building material
with screw



MLK Hollow Brick Plug with collar Ø 14

Type	14 x 90
Plug and drill Ø mm d_{nom}	14
Length mm L	90
Collar Ø mm d_k	20
Screwtype wood/chipboard Ø mm d_s	10
Screwtype metric Ø mm d_s	M10
Drilling depth mm h_o	100
Perforated Brick tension load (kN)	1.0
Lightweight Concrete tension load (kN)	0.6
Box contents	50
Outer carton	450
Quantity per pallet	10800
Article code	1101409K

Important: without hammer drilling in perforated brick and lightweight concrete / Safety factor 5 / Reached with max. diameter wood screw / 1 kN \approx 100 kg