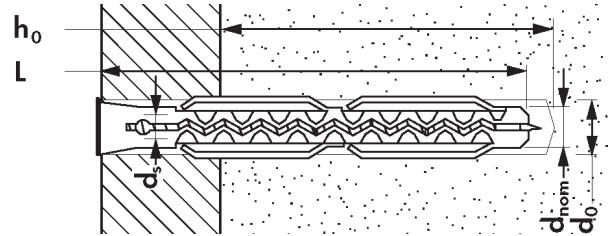


ML Hollow Brick Plug \varnothing 6/8



Building material



Concrete C20/25



Lightweight Concrete



Perforated Brick



Brick



Sand-lime brick



Gypsum

Approvals

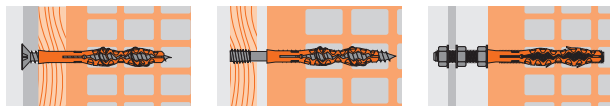


Nylon Quality
PA6

Features

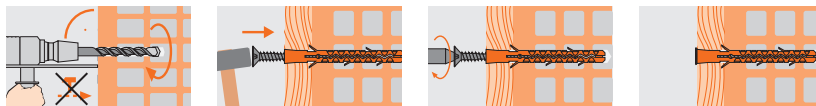
- Can be used with wood screws, chipboard screws and metric screws
- Ideal for use in brickwork
- For use with anchor rod M10 (ML14/MLK14)
- Special plug end geometry, ML6 and ML8, causes a knotting of the plug shanks
- Rotation resistance stops the plug rotating in the drill hole
- Controlles installation due to collar (MLK)
- Made from high-quality polyamide PA6
- Pre installation or through fixing

Applications



- facings
- squared timbers
- roller blinds (only MLK)
- frames
- distance fixing

Installation



Make the drill hole

Drive in the plug

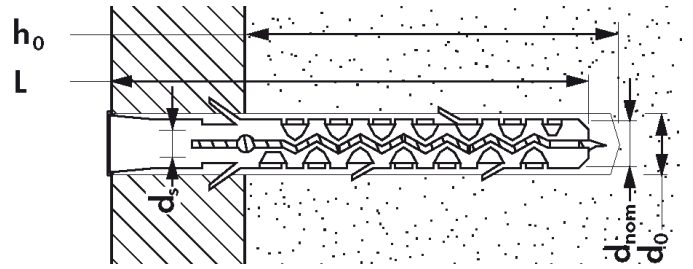
Fasten building material
with screw

ML Hollow Brick Plug Ø 6/8

Type	6 x 60	8 x 80
Plug and drill Ø mm d_{nom}	6	8
Length mm L	60	80
Screwtype wood/chipboard Ø mm d_s	3.5-5	5-6
Screwtype metric Ø mm d_s	M4	M5
Drilling depth mm h_o	70	90
Perforated Brick tension load (kN)	0.4	0.6
Lightweight Concrete tension load (kN)	0.15	0.25
Box contents	100	
Outer carton	2400	1200
Quantity per pallet	57600	28800
Article code	1100606 1100601	8030011 8030011

Important: without hammer drilling in perforated brick and lightweight concrete / Safety factor 5 / Reached with max. diameter wood screw / 1 kN ≈ 100 kg

ML Hollow Brick Plug Ø 10/14



Building material



Concrete C20/25



Lightweight Concrete



Perforated Brick



Brick



Sand-lime brick



Gypsum

Approvals

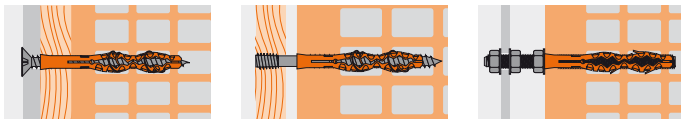


Nylon Quality
PA6

Features

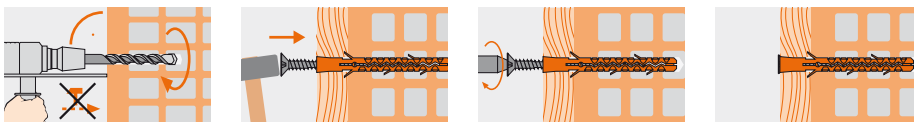
- Can be used with wood screws, chipboard screws and metric screws
- Ideal for use in brickwork
- For use with anchor rod M10 (ML14/MLK14)
- Special plug end geometry, ML6 and ML8, causes a knotting of the plug shanks
- Rotation resistance stops the plug rotating in the drill hole
- Controls installation due to collar (MLK)
- Made from high-quality polyamide PA6
- Pre installation or through fixing

Applications



- facings
- squared timbers
- roller blinds (only MLK)
- frames
- distance fixing

Installation



Make the drill hole

Drive in the plug

Fasten building material
with screw

ML Hollow Brick Plug Ø 10/14

Type	10 x 90	10 x 120	14 x 90	14 x 120
Plug and drill Ø mm d_{nom}	10		14	
Length mm L	90	120	90	120
Screwtype wood/chipboard Ø mm d_s	7		10	
Screwtype metric Ø mm d_s	M6		M10	
Drilling depth mm h_o	100	130	100	130
Perforated Brick tension load (kN)	0.8		1.0	
Lightweight Concrete tension load (kN)	0.4		0.6	
Box contents	100	50		
Outer carton	600	450		300
Quantity per pallet	14400	10800		7200
Article code	1101009	1101012	1101409	1101412

Important: without hammer drilling in perforated brick and lightweight concrete / Safety factor 5 / Reached with max. diameter wood screw / 1 kN ≈ 100 kg